

# **Harbor Bay Yacht Club Cruiser Fun Race In The Bay – August 12, 2023**

## **Sailing Instructions**

### **1. Eligibility**

All cruising sailboats are invited to race under jib and main sails only.

### **2. Rules**

The race will be governed by the Racing Rules of Sailing 2021-2024. When in doubt, follow the normal Rules of the Road and common sense. Avoid collisions. All boats must have USCG required safety equipment. All normal safety and cruising gear must be in place.

Engines must be off one minute prior to crossing the start line.

### **3. Course**

The course will be set in Sandusky Bay based on weather conditions and communicated at the Skipper's Meeting.

Possible courses are shown on Attachments A and B.

The course may be shortened by the Race Committee based on wind and weather conditions.

### **4. Starting and Finishing**

The start window will be open from 12:00 to 12:15 pm. The RC boat will also be racing but will fly an HBYC burgee and sound a horn when the start is open. You must record your start time when you cross the line. The burgee will be removed and a horn sounded at the close of the start window.

Record your own finish time when sailing through the Start/Finish line.

Report start and finish times to the Race Committee within one hour of your finish time.

### **4. Time**

The official time for this event shall be GPS time. All timing devices are to be synchronized with **GPS** time.

### **5. Radio Communication**

Radio communication will be on VHF channel 79.

Any boat that starts and decides not to finish shall promptly notify the Race Committee.

### **6. Handicap Rating**

The PHRF-LE and US Sailing PHRF Handicaps will be used to determine a rating. Cruising boat credits will be awarded based on type of propeller, roller furling jib and main sail systems.

- A Special 5 sec/mi "Crewsing" Credit will be applied if a female crew member steers the whole race.

### **7. Results and awards**

Due to the nature of the event, ratings, distance and results will be calculated after the race.

Awards will be presented at the HBYC social gathering.

## **Attachment A - Cruiser Fun Race Course Description**

Start - Finish Line will be between the Red 8 and Green 7 at the west end of the outer channel

<b><u>Course 1</u></b>	<b><u>Mark</u></b>	<b><u>Leave to:</u></b>	<b><u>N Mi</u></b>
Start	Red 8 - Green 7		
	Red 14	Starboard	1.5
	Green 13	Starboard	0.1
	"E" (R/G)	Starboard	0.2
Finish	Red 8 - Green 7		1.3
		Total	3.1

<b><u>Course 2</u></b>	<b><u>Mark</u></b>	<b><u>Leave to:</u></b>	<b><u>N Mi</u></b>
Start	Red 8 - Green 7		
	"E" (R/G)	Port	1.3
	Green 13	Port	0.2
	Red 14	Port	0.1
Finish	Red 8 - Green 7		1.5
		Total	3.1

<b><u>Course 3</u></b>	<b><u>Mark</u></b>	<b><u>Leave to:</u></b>	<b><u>N Mi</u></b>
Start	Red 8 - Green 7		
	Red 14	Starboard	1.5
	Green 13	Starboard	0.1
	Green 15	Starboard	0.8
Finish	Red 8 - Green 7		1.1
		Total	3.5

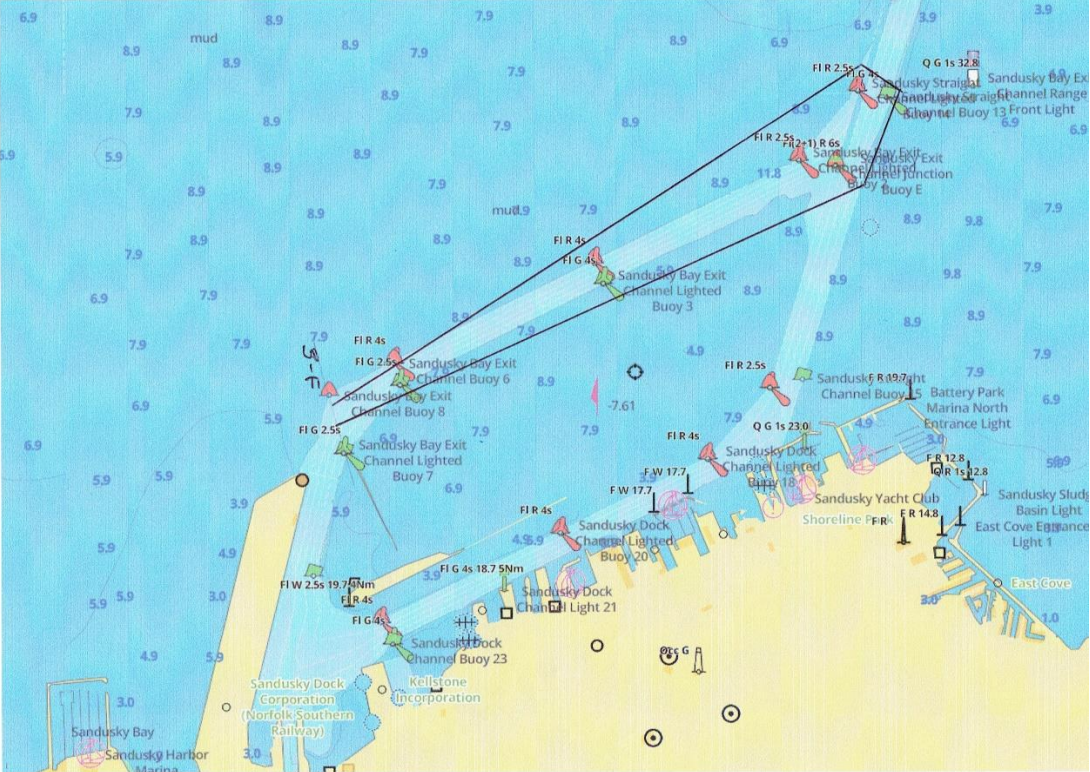
<b><u>Course 4</u></b>	<b><u>Mark</u></b>	<b><u>Leave to:</u></b>	<b><u>N Mi</u></b>
Start	Red 8 - Green 7		
	Green 15	Port	1.1
	Green 13	Port	0.8
	Red 14	Port	0.1
Finish	Red 8 - Green 7		0.7
		Total	3.5

Freighters and ferries have the right-of-way in the channel.

Please respect their restricted ability to maneuver.

If you get the five quick horn blasts denoting danger, you must retire.

Courses 1 & 2 Attachment B – Cruiser Fun Race Course Charts



Courses 3 & 4

