

2023 RACE IN THE BAY FOR STEIN HOSPICE HARBOR BAY YACHT CLUB SAILING INSTRUCTIONS

Revision 1 – June 27, 2023

1. RULES

1.1 The race will be governed by the rules as defined in the “*The Racing Rules of Sailing for 2021 – 2024 including US Sailing Prescriptions*” published by the United States Sailing Association (RRS).

1.2 The Race will be a pursuit format with handicap time allowance applied at the start. Classes will be jib-and-main (“JAM”) unless at least three spinnaker boats enter for a separate class.

1.3 Classes may be Cruising Class, PHRF JAM and PHRF Spinnaker based on number of registrations.

1.4 Due to the nature of the pursuit start, Rule 42 of the Racing Rules (Propulsion) will be modified to allow the engine to be running up to four minutes before a boat’s starting time.

1.5 Racing will be postponed if sustained wind is less than 3 knots or more than 20 knots.

2. ELIGIBILITY AND ENTRIES

2.1 The Series is open to keel-boats properly registered in the State of Ohio and equipped with the State mandated safety equipment. A competitor may enter by delivering a completed registration form and paying the appropriate fee as outlined in the Notice of Racing, either by mail, email, or in person to the Race Committee Chair. For a boat to be scored for the race and be eligible for awards, the Race Committee must receive its entry form no less than 24 hours before the race to allow time to determine the handicaps and calculate start times.

2.2 Competitors intending to sail in the race must pass within close proximity of the Race Committee boat and identify themselves visually and orally (radio may be used) prior to the Warning Signal.

3. NOTICES TO COMPETITORS Notices, including schedule changes, will be broadcast on VHF-79.

4. RACING AREA The racing area will be East of the Bay Bridge of Sandusky Bay.

5. COURSE AND MARKS (Race Course Options)

5.1 The course for the race will be announced officially at the Skippers’ Meeting. The Race Committee may change the course after the Meeting depending upon wind and weather. The official notification of course changes will be by VHF radio.

5.2 Various marks will be used. The possible courses and description of each mark are shown in Attachment A. Course diagrams are shown in Attachment B.

5.3 Boats may not cross the start/finish line midway through the race without penalty.

6. STARTING/FINISHING

6.1 All boats will have their starting times assigned by the Race Committee and presented at the skipper’s meeting. The first boat to finish wins the race.

6.2 The starting and finishing lines will be between the “RC” flag (Blue with red “RC”) displayed on the SHM breakwall and the Start/Finish mark as shown in Race Course Descriptions.

6.3 The race will be started using Rule 26 of the Racing Rules ("Starting Races") with the warning signal made five minutes before the start of the first boat. The class flag(s) will be will be announced at Skipper's Meeting and by radio.

6.4 The preparatory signal will be an "I" flag. If a boat is over the start line early, it can sail around either end and restart. She must keep clear of other boats starting.

6.5 The official time will be GPS Time.

6.6 The Race Committee will announce the start times for each boat on VHF-79 accompanied by a short horn signal.

7. COMMUNICATIONS

7.1 Radio communications will be on VHF Channel 79 or as established at the skippers' meeting.

7.2 Radio communications shall not be initiated with the Race Committee during the starting sequence except for emergencies.

7.3 A competitor who drops out of a race after starting and before finishing must immediately notify the Race Committee.

8. TIME LIMIT

8.1 The race will be abandoned if the lead boat has not rounded the first mark within one hour of the start, or if the lead boat does not cross the finishing line within four hours of the start.

8.2 The Race Committee may shorten the course after the start according to Rule 32 of the Racing Rules, if there is insufficient wind, foul weather, etc. Other options may be used by the Race Committee.

9. PROTESTS

9.1 Protests shall be governed by Part 5 of the Racing Rules, with the additional requirement that boats intending to protest must notify the Race Committee and fleet within 10 minutes of finishing.

9.2 Written protests forms are to be delivered to the HBYC clubhouse within one hour of the Race Committee Boat's docking. Forms are available from the Race Committee.

9.3 Hearings will be held in the clubhouse as soon as possible after racing, and in the order the forms are delivered.

10. AWARDS

10.1 Flags will be presented for the first three places in each class.

10.2 The first boat to finish will be awarded the Stein Hospice Cup and will be eligible to participate in the 2022 Hospice National Championship Regatta.

Attachment A: Race In The Bay Course Details

Race Mark Locations		Latitude	Longitude
All Courses:	Can Buoy - G13	41° 28.5' N	082° 42.1' W
All Courses:	Can Buoy – G15	41° 27.9' N	082° 42.4' W
All Courses:	Nun Buoy – R8	41° 27.9' N	082° 43.8' W
Black Course:	RITB inflt	41° 28.7' N	082° 44.6' W
Yellow Course:	RITB inflt	41° 28.8' N	082° 45.4' W
White Course:	RITB inflt	41° 29.2' N	082° 46.3' W

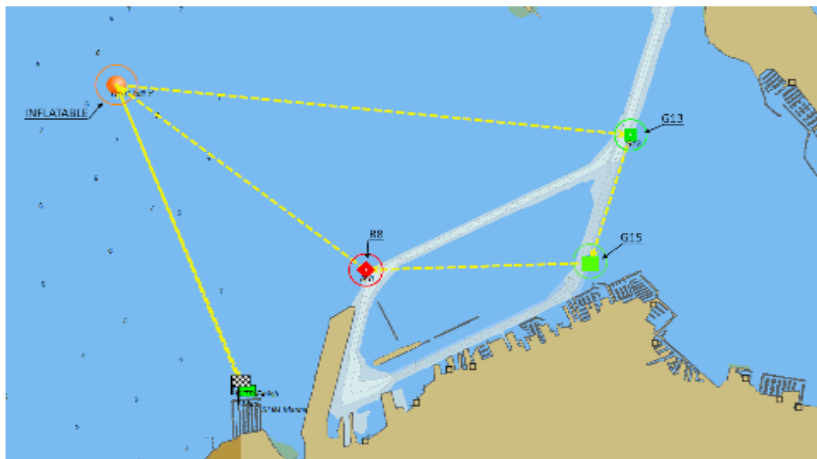
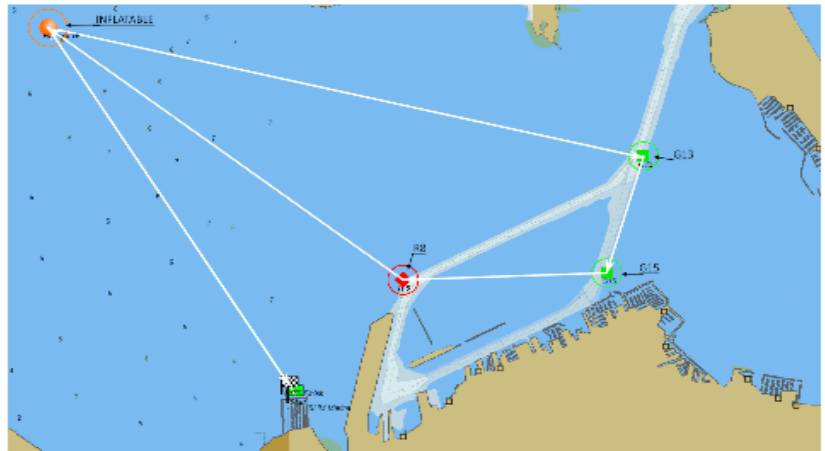
DIRECTIONS FOR WHITE & YELLOW COURSES					
<u>STARBOARD COURSE</u>			<u>PORT COURSE</u>		
Leg	WAYPOINT	PASS TO	Leg	WAYPOINT	PASS TO
---	Start	????	---	Start	????
1	RITB Inflt	STBD	1	RITB Inflt	STBD
2	Can Buoy - G13	STBD	2	Nun Buoy – R8	PORT
3	Can Buoy – G15	STBD	3	Can Buoy – G15	PORT
4	Nun Buoy – R8	STBD	4	Can Buoy - G13	PORT
5	RITB Inflt	PORT	5	RITB Inflt	PORT
6	Finish	????	6	Finish	????

DIRECTIONS FOR BLACK COURSE					
<u>STARBOARD COURSE</u>			<u>PORT COURSE</u>		
Leg	WAYPOINT	PASS TO	Leg	WAYPOINT	PASS TO
---	Start	????	---	Start	????
1	RITB Inflt	STBD	1	Nun Buoy – R8	STBD
2	Can Buoy - G13	STBD	2	Can Buoy – G15	PORT
3	Can Buoy – G15	STBD	3	Can Buoy - G13	PORT
4	Nun Buoy – R8	PORT	4	RITB Inflt	PORT
5	Finish	????	5	Finish	????

Course Distances
WHITE COURSE: 11.9 NM
YELLOW COURSE: 8.8 NM
BLACK COURSE; 6.0 NM

Attachment B: Race In The Bay Course Diagrams

**WHITE COURSE
11.9 NM**



**YELLOW COURSE
8.8 NM**

**BLACK COURSE
6.0 NM**

